

OLD and NEW ADDINGTON: After the Quake



It is just over five years since the February 2011 quake that shattered so many of the older brick buildings in Addington. The photo top left was taken by Judy Clements soon after the quake, and it shows the shattered tattoo parlour on the corner of Dickens Street and Lincoln Road. To the right is a photo taken at the same spot at the end of March 2016. Here we see the new Coffee Culture building with its outdoor extension. It was built over many months, but after the 2011 debris was cleared away, the area remained a wasteland for several years.

An indication of the continuing change we are experiencing throughout Christchurch is suggested by the Easter Bunny that you may just see in the photo top right beyond the placard.. He is promoting a new business that has opened in Bernard Street opposite. (Ed.)

The Intentional Offers Festival (continued from front page)

Photographs clockwise starting from the top left: 1. Simon Brown (It's Our Future Christchurch); 2. 350 Aotearoa; 3. Sahra (written as pronounced) sorting at the TimeBank clothes-swap stall; 4. Juliet from the LIFT Lyttelton Library with some compelling literature; 5. Win sorting children's clothes for the Timebank clothes-swap; 6. The cheerful ladies at the Chilean Hot Dogs stall; 7. Lucky Lost (a Lyttelton-based band) setting up on stage; 8. Louise catering for those who have forgotten to bring a swap; 9. a volunteer at the TimeBank's BBQ..

The Easter Bunny in Lincoln Road was giving out tiny Easter eggs and flyers to promote Plus Fitness which has just opened in Bernard Street. (No lock-in contracts, free virtual classes, 24/7 access and only \$13.95 per week.)

www.plusfitness.co.nz



Addington Times

The production of Addington Times is a joint project of Manuka Cottage/ Addington Community House Inc. and Addington Neighbourhood Association. Funding towards cost of production is kindly provided by the Spreydon-Heathcote Community Board.

Editor: Doreen Darnell. E-mail: addington.times@gmail.com
Our copy deadline is the 14th of each month, but early submissions are appreciated.

Pdf copies in colour are available on application to addington.times@gmail.com or view on-line at www.addington.org.nz

Printed by Addington Print, 322 Lincoln Road.

© Copyright remains with individual contributors.
Photos in this issue, where not credited, © the editor, *Addington Times*. Signed articles represent the opinions of the writers.

The Voice of the Addington Community



April 2016



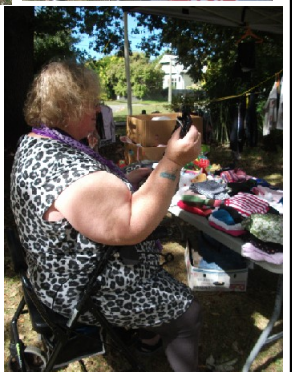
FREE TRADE—LET'S MAKE IT FAIR FOR ALL!

Simon Brown, committee member of **It's Our Future Christchurch**, proudly announced a 'TPPA FREE ZONE' in Church Square at the **Intentional Offers Festival** *on March 19 (see photo top left).

The aim of the event was to continue to raise awareness about the Trans Pacific Partnership (TPP), and to present alternative community-centred ways of running a sustainable and vibrant society. The day was organised by IOF Christchurch /Addington TimeBank/ Manuka Cottage and St Mary's. Other local groups such as **350 Aotearoa**, and **Save Our Assets** were included.

There was a bouncy castle, and a face-painter for the children, while everyone enjoyed a musical programme presented by The Lucky Lost, followed by the Natural Magic Pirates with their ukuleles, Jas Josland (guitar and voice) and Oscar Lerma (Spanish guitar). A free BBQ was available, and as usual, all the workers were volunteers. (See back page for the key to photos.)

(* My apologies for getting the name wrong in our last edition. Ed.)





 addington.net

addington.net is now based at St James Presbyterian Church at the corner of Barrington and Bewdley Streets. Our hours are 10am-12 noon, and 1-3pm. For bookings or more information, call 9627244 or email info@addington.net

Android Phone Pals

addington.net is running Free Evening Sessions on the first and third Mondays of the month at 7 – 8.30pm. Come and Learn / Share how to use your Android (or Apple) Phone. Don't let your Phone be the Boss, Take Control!

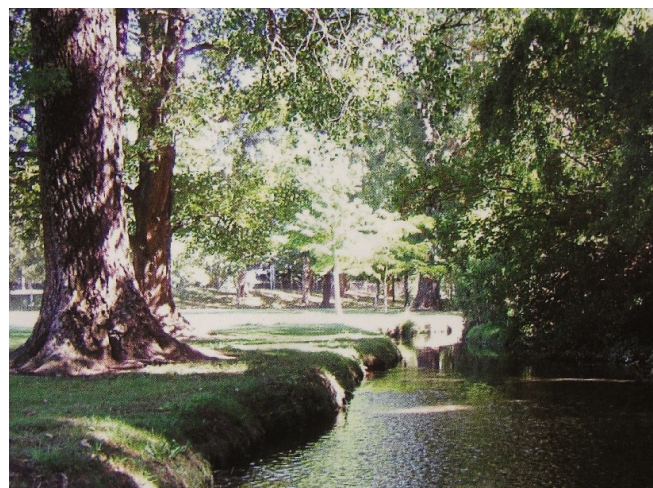
We are on Facebook, 'Android Phone Pals' group. Alternatively Enquire with addington.net Ph. 962 7244; e-mail: info@addington.net.nz

The Great Heathcote River Clean-up

On Saturday 7 May, the Opawaho Heathcote River Network is Joining the Estuary Trust and the Avon Otakaro Network in a huge city-wide clean-up of our river banks around our waterways in the 'Mother of All Clean-ups'!

Groups and individuals are asked to give an hour of their time on Saturday to help. You are invited to a sausage sizzle after the clean-up.

If you would like to take part in this great river event or want more information, we would be happy to talk to you, so please contact Helene Mautner on 337-0390



Crystal Clear Events and Rosebank Estate Winery first annual High Tea on the 16th April from 11 am to 4 pm

Kabella Vintage Fashion show
Vintage and Home Made beauty products stall
Mini Pampers The Starlets entertainment
Purchase your Tickets on
www.crystalclearevents.net.nz

GARDEN GALLERY
291 Lyttelton Street, Spreydon, Christchurch.



ULTRA MARINE:
Paintings by Jane Thomas and Denise Nicholls
Open Saturday April 2 — Sunday April 24.
Hours: 1-4pm Saturday, Sunday, Tuesday, Thursday
or by appointment—groups welcome (ph: 338 1571).

Sharon Thompson's Story



orphanage. It provides palliative care for children with terminal illnesses, and orphans including those suffering the effects of Agent Orange. 'I don't want for a lot in life... When you go to places like that you realise what is really important in life. We are so lucky here in New Zealand.'

Another example of a cause close to Sharon's heart is her unpaid work with Heartfelt Memorial Photography. There are fifteen staff in the South Island. She mentors them and manages the relationships between them, the parents who have lost children to cancer or still birth, and the hospitals. (You can go to heartfelt.org.nz to find out more and make a donation.)

Regulars at the Coffee Co-op in Lincoln Road will know the familiar face and stylish frocks of Sharon Thompson. The busy café is her de facto office. The wonders of wireless technology mean she is able to keep a track of her own clothing label, her photography business and her voluntary work from her unconventional workspace. 'I'm here almost five days a week. The staff are almost like work-mates. Meetings, editing, correspondence with organisations—I'm here all the time.'

Sharon's dress style sets her apart. The day we met, she was modelling one of her own designs with her hallmark bright floral pattern. It's one from her vintage-influenced clothing label, 'The Bloom Effect'.

The voluntary work she does is a very important thread in the fabric of her life. The organisations she supports do work that is very dear to her heart. Sharon has to do work that pays in order to keep the mortgage paid: 'I have a clothing line and Bloom Photography and that means I have the flexibility to work my own hours. I could never do that with a nine-to-five job. I don't get paid for my other work but I value it so much.'

For instance, Sharon has gone to Vietnam twice a year for the last four years to work in an

Also, Sharon is collaborating with the medical clown doctors to hold an exhibition of her photographs to raise funds for their service. Her work will capture the happiness on the faces of old and young alike as they interact with the clowning hospital practitioners.

'I'm grateful for my life so I am giving back to people, she says. I turn forty in July. I like being where I am in my life now. Five years ago I asked myself what my ideal life would be like and I set about creating it.' How did she achieve what so many people fail to do? 'Just believe it's possible.'

Sharon Thompson can add 'campaigner' to her list of credentials: 'I love Addington. I'll never leave.' It's that love of the suburb she calls home that drives her to stop a major liquor outlet from setting up in Lincoln Road.

'I'm not a teetotaler but booze culture... We want to put a limit on the number of licenced liquor outlets in Addington. There are too many around here. I went door knocking to give out objection forms. The owners of Coffee Co-op have put one in. There's a hearing at the end of March. My attitude is: if you want to do something just do it and don't sit on your bum and do nothing.'

Di Boyd

TUNE INTO RADIO ADDINGTON AT 107.5 FM.



Bring toys (in good condition) and some clean, tidy clothing you no longer want. Find and keep toys and clothing you like.

Costs nothing, great fun

Where? Manuka Cottage, Church Square

When? Last Wednesday each month
11am-1pm



Photo above: The Timebank toy and clothes swap stall.

Stories from the Timebank

There has been a lot of time-swapping going on around Addington, which is fantastic to see.

Menna has been helping Ian in his garden and Ian says it is looking good as a result of her work. In fact it is looking so good that the neighbours in his block of flats have started to work on their gardens as well!

The children in Addington Oscar earned time-credits by making cards for the TimeBank and they used some of their time credits to hire a storyteller from Lyttelton. They liked the storyteller so much that they plan to get her over again.

Chrys has collected and delivered some goods for Jane, and Jane has provided some gardening for Sue. Sue has had help from Rosemary.

Gen received hours from Kate for house-sitting and Kate has received hours for running a film evening when she showed *The Hidden Secrets of Money*.

Gen has given hours to Richard who provided some advice about what she might do to stop her fridge leaking.

In the meantime, there are still many requests posted on the TimeBank and many great offers as well. If you haven't joined us then do it now. If you have, then head to the website and check out what is happening. Just go to www.addingtontimebank.nz to find out more (and yes that address is correct!).

If you have not got computer access then come along to 12 Grove Road between 11am and 1pm on Tuesdays and Thursdays or drop in there when you see our signs out. You can also join by coming to Manuka Cottage on Wednesdays between 11am and 1pm.

If none of that works for you, then give us a ring and leave a message on 338 1613 or 0272 86 86 53.

Jen and Chrys.

Manuka Cottage Addington Community House Incorporated

Operating from St Mary's Church

Activities Co-ordinator: Dianne Fitzgerald

A warm and friendly place for you to enjoy, run by the community for the community.

- Mon** 10am Walkie Talkies Walking Group
10am-1pm Coffee n Chat—10c per cup
11am Parlour Games, Jigsaw Corner, etc.
11am—1pm Art Group (*limited places*)
- Tues** 10am—3pm **Women's only Day**
Morning tea
Bits and Bobs Projects, Bring and Buy
12pm shared lunch
1—3pm Craft Group - *gold coin donation*
- Wed** 10.30 -11.30 cuppa n chat
12-1pm Community Lunch - *gold coin donation*
11am-1pm Manuka Trading Post Timebank
11am-2.30pm Manuka Fruit and Vege Co-op
Collect your order and pay \$15 for the next
- Thurs** 10.am Addy-venturers Walking Group
10-12 noon Café 10c per cup, 20c biscuit
12.30-2.30 Mothers' Community Programme

New activities and groups will arise from time to time. Our goal is to help you to have a sense of belonging and connection in your neighbourhood. **Everybody is welcome and accepted.**

Cherylan Davies, Community Development Worker,
Ph: 338-2591, or visit us at our temporary location at St Mary's, Church Square. manukacottage@clear.net.nz
Check our Facebook page at facebook.com/manukacottage-nz

ADDINGTON BUSINESS ASSOCIATION

Contact Dean at:

addington.business@gmail.com

Megan WOODS

Member of Parliament for Wigram



P 338 6347 or 338 6307

E megan.woods@wigram.org.nz



Labour

Authorised by Megan Woods MP, Shop 8/12 McCarthy Street, Christchurch

ADDINGTON NEIGHBOURHOOD ASSOCIATION

ANA has two trailers for hire, so please contact Eric if you need to hire a trailer (tel: 981-5252). This year it looks like there will be a few changes with the cycleway coming through Addington, and this may be due to start around spring/summer time.

Would love to see some new faces along to meetings; come along and share your ideas with us at the meetings.

Next ANA meeting is 27th April at 6.30pm in St Mary's Church, Church Square. We may look changing the time, as I have four children and struggle to be ready by 6.30pm.

Sarah McKenzie (ANA Chairperson)

My Mistake—Ed.

A reader recently wrote: 'I was interested to read in the Addington times about how nice the traffic people are to think of pedestrians by putting a median strip on Lincoln Road.

Unfortunately, they weren't thinking of pedestrians at all! That median strip was put in due to the new motel being built on the corner of Lincoln Road/Whiteleigh Ave. It is to prevent people turning right into it coming down Lincoln Rd. Or right out of the motel onto Lincoln Rd. This is because the entrance is so close to the junction it creates a safety hazard.

As the new motel is a private enterprise, owned by overseas investors, I am not sure the ratepayers would be happy to find that their rates are being used to fund a private developer! So much for the Traffic Dept thinking of pedestrian safety first!



The photo above shows the newest median strip on Lincoln Road. Sadly, the motel on the corner appears to be a very ugly building set far too close to its neighbour.

ANZAC DAY

Community remembrance service
to be held at St.Mary's Church
on Monday 25th April
at 10am

To remember those who lost their lives,
and all who served in the wars, and their families.

ALL WELCOME

Photo right: St Mary's Lych gate (1921) dedicated
"To the glory of God and in memory of the boys of
Addington who fought in the Great War 1914-1918"





Photo left: (L-R) Spreydon / Heathcote Community Board members, Helene Mautner and Melanie Coker, with Lori Ford (Engagement Advisor) and Dane Moir (Council Delivery Assistant) who attended the Community Consultation evening on March 8 with maps of the proposed Community facility for Cornelius O'Connor Reserve and response forms for local residents.

Manuka Cottage: An asset in Addington

Manuka Cottage was established in 1993 by the people of Addington, Anglican Care Community Development and the Spreydon Heathcote Community Board. That means that for 23 years Community Development has been hip and happening here in Addington!

Manuka Cottage is NOT a drop-in-centre or a hangout for the 'down and out'. It is a place for people to gather, make connections, participate in activities, groups and projects, and most of all it is a Community Development Hub that seeks to empower Addington to define its own identity and to strengthen it so that ALL people have a sense of belonging, feel safe in their neighbourhood, contribute to and participate in the world around them.

For 23 years Addington-ites have enjoyed toy libraries, tool swap and job support programmes, playgroups, Out-and-About trips in the red double decker bus, picnics, BBQ's, and numerous neighbourhood events. Manuka Cottage projects have included Meet-the-Candidate luncheons for political, Council and Community Board elections; the Addington Fun Fair, along with St Mary's Church and Addington Neighbourhood Association; the Addington OSCAR after School and Holiday Programme at Addington School; Addington TimeBank; Addington Fruit & Vege Co-op; the native planting around the creek in Addington Park; healthy community lunches; parenting programmes; TweedleDum and TweedleDee consultations and so much more!

Then there are the Community Development projects that involve this writer asking the community what their views are on issues that impact Addington, and then

where possible doing something about them: for example, organising the R18 Legal High protest on Lincoln Road; gathering signatures for such petitions as the ones concerning parking in residential streets, and the four-laning of Lincoln Road through the shopping area.

Consultations have involved calling the Church Square Matters group; finding out how Addington wanted to be represented in the Representation Review, the 10 year, Long-term and District Plans; the proposed cycle way through Addington; speaking on Addington's behalf at the Representation Review Hearing Panel to stop Addington being split into three Wards, and so much more.

This writer works collaboratively with groups such as St Mary's Church, Addington Neighbourhood Association, Kingdom Resources, the Salvation Army, the Spreydon Heathcote Community Board, Christchurch City Council and incumbent MP Megan Woods. This is what Addington would lose if Manuka Cottage could not operate in Addington.

Thank you to the people who engaged with Council staff concerning Manuka Cottage having a building in Cornelius O'Connor Park. Well done! Addington has a rich historical background and an awesome engaged community here in the present to look toward the future. Together we have worked on the motto: Addington—A Great Place to Live, Work and Play!

Cherylan Davies,
Community Development Worker.



COMMUNITY CONSULTATION ON THE PROPOSED COMMUNITY FACILITY FOR CORNELIUS O'CONNOR RESERVE TO BE A HOME FOR MANUKA COTTAGE.

The pictures here were taken at our consultation evening on May 8. The event was planned to take place at Cornelius O'Connor Reserve, but due to heavy rain, was transferred to St Mary's Church. People gathered at various tables to demonstrate some of the projects currently run by Manuka Cottage.

The Cornelius O'Connor Reserve location was chosen for the new facility because the Council owns the land, the reserve is at present under-utilised, and the area is accessible to those living in the established residential area of central Addington. Consultation forms allowed respondents to agree or disagree, giving their reasons. Responses could also be submitted on-line.

The consultation period has now closed and the outcome should be known some time this month (April, 2016). A decision is anticipated in May 2016.

Photos at the top of this page show some of the locals who attended the consultation session. Hot dogs and hot drinks were available.

Photographs by Di Boyd and the Editor, Addington Times.



Addington Times is a Manuka Cottage project. It is currently published monthly with the exception of January. It is put in most residential letter-boxes and is available by e-mail in colour. (Send your request and e-mail address to: addington.times@gmail.com)

All contributors and distributors are volunteers. Funding is sourced by our Community Development Worker, Cherylan Davies.

MANUKA COTTAGE ACTIVITIES

These include the Art Group. In the photo (right) members' work is on display.



FRUIT & VEGE CO-OP

In the photo, right, Tim Redwood (L) and Ian Rawson (beside him) deal with Addington orders for weekly fruit and vegetables.

A generous selection of in-season produce is paid for a week in advance (\$15) and the produce is collected on Wednesdays 11am 2.15pm.

Other volunteers pack the bags off-site and deliver them to Manuka Cottage (currently hosted by St Mary's Church, Addington).

