

OLD ADDINGTON: St Mary's Lych Gate.



It is fitting to feature St Mary's lych-gate this month. The gate was erected in memory of the young men of Addington who died overseas in the 'Great War' 1914-1918, and we recently remembered them on 25 April—ANZAC Day. However, although the first World War ended in 1918, there was no war memorial in Addington until 1921.

Before then, the Anglican parish was run by a group of men. Women were not permitted to sit on the church council, despite the fact that Kate Sheppard (who is buried in Addington Cemetery) had, with many others, gained the national electoral vote for women in 1893.

It was not until 1920 that Anglican churchwomen were allowed to attend church council meetings and to vote. Then, Miss Shirtcliffe and Mrs Earnshaw proposed and seconded a vote to build a memorial at St Mary's. The vote was won, and a committee of 8 women and 4 men was appointed to approve the design and erection of the memorial. The dedication plaque is on the wall behind the open gate in the above photo. Have a look when next you are passing.

(Information from church records. Ed.)

Addington Times

The production of Addington Times is a project of Manuka Cottage/ Addington Community House Inc. Funding towards cost of production is kindly provided by the Spreydon-Cashmere Community Board.

Delivery issues: contact manukacottage@gmail.com
Editor: Doreen Darnell. E-mail: addington.times@gmail.com
Our copy deadline is the 14th of each month, but early

submissions are appreciated. Pdf copies in colour are available on application to addington.times@gmail.com or view on-line at www.addington.org.nz

© Copyright remains with individual contributors. Photos in this issue, where not credited, © the editor, Addington Times. Signed articles represent the opinions of the writers.

The Voice of the Addington Community

Addington Times

May 2017



Cycleway in Addington

As you may be aware, the cycleway down Collins Street around Church Square and down Grove Road is almost complete. Thank you to the residents, motorists, cyclists and pedestrians who have been affected by the disruptions. You have been good role models in the face of change.

Grove Road and Collins Street have had major changes and I encourage you to walk around to be familiar with the changed layouts. There have been a number of comments from residents concerned that Grove Road is very narrow for two-way traffic. Of course this is correct, but I have noted that the parking restrictions on Grove Road are now for 1 hour as opposed to 2 hours, resulting in fewer cars parked along Grove Road by people who work in Addington. This allows for cars to duck into the space created by driveways so the oncoming vehicle can pass. It will also produce the desired effect of slowing down the traffic in this area and may encourage cars to take an alternative route if they consider it too much of a nuisance. Residents along Grove Road will also find there will be a few more parks for their visitors.

I would like to point out that this answers some of the questions raised by residents during the Tweedle-Dum and TweedleDee consultations at our annual Addington Fun Fair. So a win-win situation—don't you think? You may be challenged to reframe how you have considered the changes now here, and that is a good thing. It is conducive to the grey matter meaningfully bumping around in your head and will hopefully produce a healthy attitude! Here in Addington sharing the streets with cars, pedestrians and cyclists is important and it is something that is generally done well. That of course is one of the reasons Addington is such a fantastic place in which to ...

live, work and play!

Cherylan Davies
Community Development Addington
Manuka Cottage

The photo above shows St Mary's lych-gate (far left) and the new cycleway which crosses to Grove Road just before it reaches the lych-gate.

addington.net



We are based at Lighthouse Baptist Church on the corner of Barrington and Bewdley Streets.

Open: Mon-Fri, 10am -12 noon, and 1-3pm.

Addington.net offers expert assistance in all aspects of computer use at minimal cost.

For bookings, call 9627244 or e-mail: info@addington.net

ENTER OUR COMPETITION →

Addington.net is holding a competition for a new name and logo to better reflect the work we do and the area we serve.

For the last 16 years Addington.net has provided learning sessions on every aspect of digital technology, including access to the internet, computer use, printing (including 3D printing), scanning and laminating. We continue to offer these services from our office at 389 Barrington Street, Spreydon.

In 2016 Addington.net began reaching out to other Christchurch community organisations and groups to better meet the technology needs of people where they gather. As a result, Addington.net now provides digital technology learning sessions at a variety of different organisations and groups in many different Christchurch communities and continues to grow this aspect of the Addington.net service.

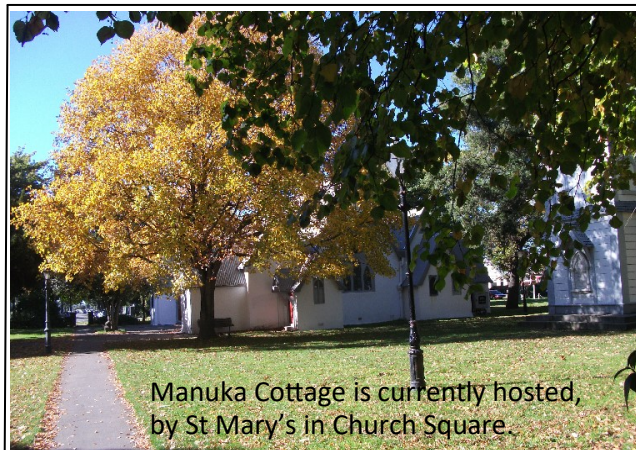
Further details of the Addington.net name change and logo competition – including entry dates and prize information – can be obtained from us by telephone (962-7244) or email: info@addington.net.nz

Book, CD and DVD Exchange

Do you have books, CDs or DVDs that you no longer need? You can come along to Manuka Cottage and swap them for another item! Manuka Cottage is temporarily hosted at St Mary's Church in Church Square. We are easy to find and are a warm and friendly community organisation that would love to see you.

The way it works is you bring x amount of items in very good order and you can swap them for the same number from any of the goods on offer. If you do not get to swap there and then, take them away and you can return on another day! There is no cost to this fun activity, and if you time it right, for a gold coin donation you can enjoy hot and nourishing soup and garlic bread for lunch at noon.

Manuka Cottage is running this new activity every Wednesday 10.30am - 12 noon. Pop in and check it out! For any information leave a message for Cherylan Davies on 3381613.



Manuka Cottage is currently hosted, by St Mary's in Church Square.

COMMUNITY DEVELOPMENT IN ADDINGTON

Heritage in Addington

This is very hot topic and will probably remain at the centre of many conversations for a long time to come if the comments from community consultations held by TweedleDum and TweedleDee are anything to go by. By the time you are reading this I will have attended a workshop on 'Exploring new ways of working together' gathering vital information on the different aspects of heritage and not just buildings but places and community. My intention is to represent the impact of what intensive housing does to a community through the loss of houses, streetscapes, changing places and the impact on a community through these changes. I will report more on this in future articles.

Addington Community Plan

Conversations are continuing on creating an Addington Community Plan driven by the residents, community organisations and business in Addington. The information collected by TweedleDum and TweedleDee over the last few years will feed into this plan. Through the *Addington Times* and various other means we will begin to collect your views on what should be represented in this plan. We want to hear from every age and stage, community groups and business in Addington. Watch this space!

Cycleways

Almost done! Thank you for your patience when roads are closed off or have become one way. It will be

interesting to see what impact it will have on traffic and parking in the affected streets.

Meet the Candidates

It is New Zealand's General Election year and once again we will host an opportunity for you to meet, hear and question the candidates standing in Wigram and Christchurch Central. The elections will be held on Saturday 23 September 2017. Before you can vote you need to enrol and if you have moved from where you lived since the last election you will need to update your information. You can do this online at <http://www.elections.org.nz/> Keep an eye out for more information in upcoming issues.

**Cherylan Davies,
Community Development Addington**



The new cycleway heads round St Mary's towards Collins Street.



Tutoring for Charity Trust have chosen Catapult Employment Services to be the recipient of their donations for 2017. Funds are raised through a variety of workshops held by Tutoring for Charity Trust and go towards assisting people to find paid employment.

Tutors donate their time — participants get to learn a new skill as well as knowing that their fees make a valuable contribution to society. Current workshops are all on Friday afternoons from 1pm to 4pm:

5th May: Weave a two-cornered basket/kete using traditional weaving techniques. This is a versatile basic technique to learn which can be used for a number of different projects.

19th May: Weave a large container using a different

weaving technique that uses the whole flax leaf.

2nd June: Make flax cordage that can be used for craft work and pottery, basket handles, ropes, garden ties and any of the other multitude of uses for a piece of rope!

Venue: 478 Barrington St, Addington, Christchurch. Park on the road or in the sports park just past the venue. Look for the signs for Catapult Employment Service offices just around the corner from Lincoln Rd.

The price for these half-day workshops is \$40 per person per half-day workshop. You can choose to come to all of the workshops or just come to one.

To secure your place in each workshop, please contact Ali on 021 290 0636, or reply to this email, or contact Ali at: alisonbrown@ces.org.nz

TUNE INTO RADIO ADDINGTON AT 107.5 FM.



ADDINGTON TIMEBANK

Our members exchange their time helping others in order to 'purchase' the help that they themselves need. Members don't have to make a one-to-one exchange. Just advertise what you can offer and/or the help you are looking for, and see who responds.

You can join us either on-line at www.addingtontimebank.org or come to our community centre, Manuka Cottage (currently based at St. Marys, Church Square), 11am to 1pm on a Wednesday, and have chat to Chrys.

Timebank News

I went to the Living Economies Expo at the beginning of this month over in Lyttelton. The main focus was on thinking about how to change the system that is driving us all to continue creating more poverty and suffering, whilst also destroying the planet.

Money is many things, but one of its most important functions is to be a medium of exchange. The increasing concentration of wealth into the hands of a few means that many people can't get the goods and services that they need, because they don't have money to pay for them.

The silly part about that is that we have an enormous number of skills, abilities and goods in our community, but the people with them are not using them, and the people who need them aren't getting them. We create value by exchanging our different skills. We could barter with each other, but this makes the task of trade more difficult because we have to find someone who needs what we have, and who has what we need.

Money is not valuable in and of itself – it is only valuable because we agree to honour it. If we all did things for

time credits, for example, we could support each other's needs, and this is valuable particularly when our national currency is not serving us well. Timebanking is worth doing because it allows us to use other ways to find and exchange skills with each other. It also helps us to recognise what money is and to question the influence we allow it to have on our lives. We can change things, but we won't do that until we start to question what we simply take for granted.

Timebank Workshops

After the bread making course in March we're keen to see some more workshops take place. What would you like to learn about? So far we have had suggestions of a workshop on mindfulness, and gluten free cooking.

What else would be of interest? Check us out online at www.addingtontimebank.nz or email us at addington.timebank@gmail.com or phone me on 0272 86 86 53 to make suggestions, or register your interest in either of these (so we can keep you posted when we work out when/where), or so that you can find out more about Timebanking.

Chrys

Spotted in Church Square:

The recent heavy rain has encouraged the growth of fungi.

Check this one out in colour on line.
Photo thanks to Sue Gorton.

ADDINGTON BUSINESS ASSOCIATION
Contact Dean at:
addinton.business@gmail.com



Manuka Cottage Addington Community House Incorporated

Operating from St Mary's Church

Activities Co-ordinator: Dianne Fitzgerald

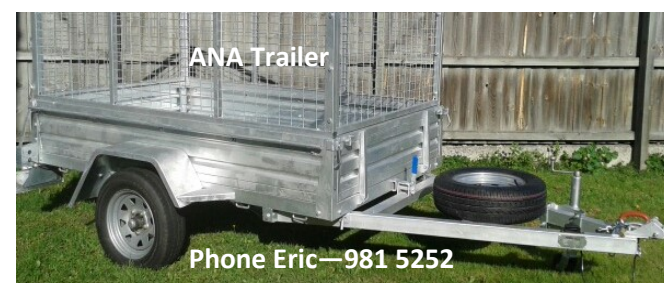
A warm and friendly place for you to enjoy, run by the community for the community.

- Mon** 10am Walkie Talkies Walking Group
10am-1pm Coffee n Chat—10c per cup
11am Parlour Games, cards, etc.
11am-1pm Art Group (*limited places*)
- Tues** 10.30am- 3pm **Women only Day**
Morning tea, Bits and Bobs Projects, Bring and Buy
12 noon Shared lunch
1pm Craft Group - *gold coin donation*
- Wed** 10.30 -11.30am cuppa n chat
12-1pm Community Lunch - *gold coin donation*
11am-1pm Manuka Trading Post Timebank
11am-2.30pm *Manuka Fruit and Vege Co-op*
Collect your order and pay \$13 for the next
- Thurs** 10am Addy-venturers Walking Group
10.30am-12 noon Writers' Group
10am-12 noon Café 10c per cup, 20c biscuit
12.30am-2.30pm Mothers' Community Programme

New activities and groups will arise from time to time. Our goal is to help you to have a sense of belonging and connection in your neighbourhood.

Everybody is welcome and accepted.

Cherylan Davies, Community Development Worker.



Phone Eric—981 5252

Megan WOODS
Member of Parliament for Wigram



ADDINGTON NEIGHBOURHOOD ASSOCIATION

This month we were hoping to have reports back on the Selwyn Street Streetscape, we are also waiting to hear back about the liquor licence application on Selwyn street. Thanks to those in our community who have put in submissions for both of these.

Don't forget that we have two trailers for hire at good community rates. Contact Eric—after 5pm is the best time.

The accessible survival kit will be up and running very soon. Check out addington.org.nz you can and see how easy it is to buy with weekly payments.

We discussed the new town houses that are popping up rather quickly on Burke Street, and the L2 and L3 zoning. Other areas of Christchurch South have had zoning changes where the residents may not have been aware. Our Neighbourhood Association is in close contact with other residents' associations

We often meet to discuss local issues like making intersections safer. Barrington Mall entrance from Barrington Street causes traffic issues for motorists, pedestrians and buses. Making the intersection safer at Simeon Street and Milton Street for pedestrians crossing the road is on the list as well.

If you have any concerns within the Addington area then please contact us or join us at a meeting on the last Wednesday of the month at 7pm at St Mary's Church.

Sarah McKenzie, ANA Chairperson.
addington.neighbourhood@gmail.com





Photo above: Master printer, Brian Mackay.



Brian Mackay printed the *Addington Times* at Addington Print in Lincoln Road for many happy years. He died on 21 April 2017.

Brian was a wonderful and much loved man who was extremely generous with his time and help for the Addington community. Kia Kaha, Toko.



Photo above: Two adjacent houses on the east side of St Mary's Church have recently been sold. Watch this space!

WARM, DRY HOMES FOR WINTER

If the home you own or rent is cold and damp, if your windows drip with condensation, if there is mould present, if you need curtains to keep your rooms warm, if you have a heart attack every time you get your power bill then Community Energy Action is the place for you!

Community Energy Action is a charitable trust serving the Christchurch region focused on keeping houses dry, healthy and warm. They provide free, recycled curtains to low income households, offer advice, free or subsidised insulation, subsidised efficient heating, free independent energy advice, low cost DIY energy efficient products and much more. It doesn't matter if the house is owned or rented. You can check it out on their website www.cea.co.nz or phone 3747222 or 0800 438 9276.

Your landlord can take advantage of the many free or subsidised products on offer. You can call them and have a chat about your concerns and they will advise you on the best options. Honestly, this is a service and they are not out to sell products. They care about people living in cold and unhealthy homes and want to make things better for you.

Manuka Cottage is a partner of the curtain bank and can vouch for the vast array of good quality curtains in a variety of colours. If you are interested in getting some curtains phone or text Cherylan 0220-175478 or leave a message on 3381613 because you will need to get a form to apply for the curtains.

Cherylan Davies ,
Community Development Addington

Selwyn Street Shops update

Back in 2012 *Addington Times* featured the Selwyn Street shops. They are a cluster of shops that suffered badly in the earthquakes, but were recovering. The shops are part of Addington even though they are south of Brougham Street. They are very near the curve of Selwyn Street opposite Rosewarne Street and close to Addington School.

We featured the little 'drive-in dairy' on Somerset Crescent and the hairdressing-cum-coffee shop, 'Hello my name is Barber'. Recently I met with the owner of the barber's shop, Levon Maeder, whose shop is open Monday to Saturday. Gold Card holders are eligible for a discount on their haircut. 'We do that out of respect. Most of them are on a fixed income' Levon says.



Photo above: (L-R) owner Levon Maeder, sits outside his shop with barber, Michael West, and customer Simon Carey. Photo by Di Boyd.

Some things haven't changed: the Silvan building on the southern corner of Brougham and Selwyn Streets is damaged and seemingly abandoned; the whiteware repairers and little dairy are just as they were five years ago.

Opposite, work is underway on the Christchurch South Tongan Methodist Parish's new hall. The old one had to be demolished due to earthquake damage. The Superintendent Minister, Moimoi Kaufononga says construction should be finished by late July. The adjoining church has been strengthened and is being used again.

The Selwyn Street shops include a hair and beauty shop, a medical laboratory, a pharmacy, the Selwyn Street Medical Centre, a tavern and a fish and chip shop. Since our story, a rebuilt block of four shops is yet to be occupied but another is already well established with an accountant, a health monitoring facility, a pies and coffee shop, and a superette. Commercial development of a large vacant piece of land between Selwyn and Rosewarne Streets is still on the cards. The numbers 60 and 120 buses stop nearby.

Di Boyd



Photo left: The Christchurch South Tongan Methodist Parish church hall is being rebuilt after the quakes.

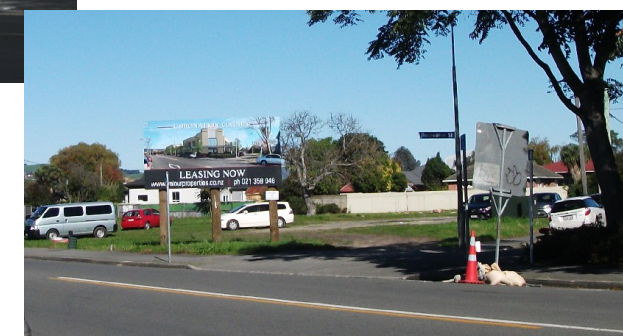


Photo right: a large section is still available for development in Selwyn Street. It may be affected by Council's future street enhancement plans.