

OLD ADDINGTON: The weekly shopping

How things have changed! Older Addington residents will remember the days of the local stores where women (mostly) would take their wicker baskets from shop to shop to collect meat from the butcher, bread from the bakery, and dry goods from the general store.

Graham Robinson, who ran Everybody's Butchery in Selwyn Street until he retired a couple of years ago, has estimated the number of butcher's shops in Addington to have been well into double figures over the years. This was probably due to the proximity of the Addington Saleyards and local abattoirs, plus a lack of refrigeration. Now we have only two butcher's shops: Everybody's Butchery and The Halal butcher in Lincoln Road.

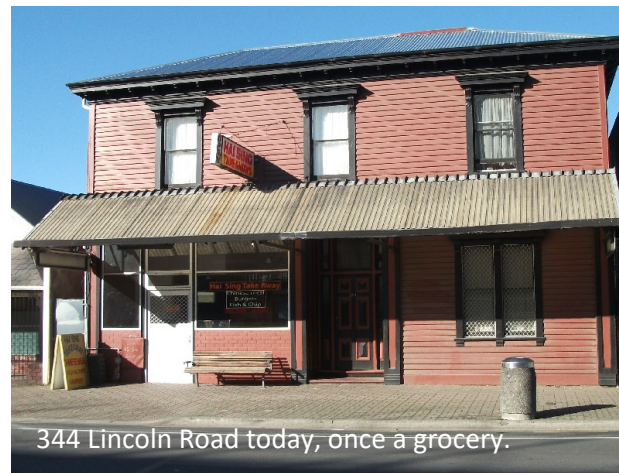
Early Addington probably had almost as many general stores as butcher's shops. Mr Morris established the general store at 344 Lincoln Road in 1931 and his son, Jack, was running it in the 1950's. (Today it is a take-away.)

Modern supermarkets have been the focus of our shopping activities in recent times, and meats come pre-packed and priced. While some locals patronise Raewards, the up-market shop mainly offering meat and vegetables at Tower Junction, many Addingtonians now shop at the Barrington Mall in Spreydon, or take a bus into the city. Sadly, plastic shopping bags abound!

However, the ever present dairy has been the emergency go-to for many a year. Locals remember the dairy at the corner of Selwyn and Poulson Streets as a fixture since the 1950s and beyond. (Ed.)



Photo above: A model of the traditional butcher—purchased recently at the Sallies' Secondhand Store



344 Lincoln Road today, once a grocery.



Dairy —Selwyn/Poulson corner.

Addington Times

The production of Addington Times is a project of Manuka Cottage/ Addington Community House Inc. Funding towards cost of production is kindly provided by the Spreydon-Cashmere Community Board.

Delivery issues contact: manukacottage@gmail.com
Editor: Doreen Darnell.
E-mail: addington.times@gmail.com
Our copy deadline is the 14th of each month, but early

submissions are appreciated.

Pdf copies in colour are available on application to addington.times@gmail.com or view on-line at www.addington.org.nz

© Copyright remains with individual contributors. Photos in this issue, where not credited, © the current editor, Addington Times. Signed articles represent the opinions of the writers.

DISCLAIMER: as Addington Times is classified as a newsletter, we will deliver to mailboxes marked 'No Junk Mail', etc. If you do not wish to receive it for any reason, please contact Cherylan Davies, Manuka Cottage 3381613 and leave a message, or txt STOP and your address to 0220175478.

The Voice of the Addington Community

Addington Times

September 2017

WE MEET THE CANDIDATES

Cherylan Davies (Manuka/Addington Community House Community Development worker) ran a very successful 'Meet the Candidates' session at St Mary's Church, Addington, on August 22nd, prior to the September 23rd General Election.

The candidates pictured below were those who responded to Cherylan's invitation. They individually answered questions picked out of a 'hat', then each responded in turn to questions on climate change and health. Finally they were grilled on their party policies by members of the audience.

Many thanks to the ladies of Manuka's 'Bits and Bobs' activity group who provided as delicious supper, while candidates stayed to chat to the locals.

CANDIDATES FOR THE WIGRAM ELECTORATE:



Dr Megan Woods, current Labour MP for Wigram, grew up in Spreydon, was a Community Board member before becoming MP; speaks on climate change, fairer taxation, the rebuild, etc.



First time challenger for National, David Hiatt, has interests in small business and tourism.



On behalf of Green party candidate Richard Wesley who is ill, Dr Chrys Horn, explained Green policies on clean water, living wage, etc.



Democrat Social Credit candidate, John Ring, wants a Lyttelton-to -Wellington Ferry and binding citizens' referendums.

CANDIDATES FOR THE CHRISTCHURCH CENTRAL ELECTORATE:



Nicky Wagner, current National MP, spokesperson on disability and the Christchurch rebuild - fully supports National's track record.



Lawyer, Duncan Webb for Labour, has advocated for those with unresolved quake claims and shoddy repairs. People are his 'top priority'.



Lawyer, Dr Peter Richardson, for the Greens wants to be 'the Green heart of a Labour led government.' Issues: water, social housing, carbon neutrality.

NB. The following candidates did not respond to the invitation: Chris Brosnan, Wigram Conservative candidate; also NZ First candidates for both electorates.

An apology was received from Ngaire Button, Te Tai Tonga.



We are based at Lighthouse Baptist Church on the corner of Barrington and Bewdley Streets.

Open: Mon-Fri, 10am -12 noon, and 1-3pm.

Addington.net offers expert assistance in all aspects of computer use at minimal cost.

For bookings, call 9627244 or e-mail: info@addington.net

addington.net

COME TO OUR AGM!

Addington.net is holding its 2017 AGM on Monday, 11 September at 389 Barrington Street, Spreydon (this is the church building on the corner of Bewdley Street).

We warmly welcome all clients, supporters and interested parties of Addington.net to attend. This is a chance to meet the people of Addington.net, including those who work behind the scenes to keep the service running and serving your community.

Light refreshments will be served, so please let us know if you will be attending. Please contact us on 962 7244 or email info@addington.net.

KEEP NEW ZEALAND BEAUTIFUL WEEK

As part of Keep NZ (Addington) Beautiful Week we will be having another 'tidy up' of the Addington Cemetery on Saturday 16th September starting at 9.30am until 11.30am (wet or fine).

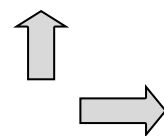
Meet at the main entrance in Selwyn Street. Our local park ranger will outline what needs to be done.

Please wear suitable footwear and clothing. We will have some gardening gloves but if you have a pair please bring them along.

Certificates of Appreciation will be given out at end of event and we will gather for a BBQ in Fairfield Avenue.

Organised by Addington Neighbourhood Association and St. Mary's Church with support from KPNZB Auckland.

Alan Hudson.



**THIS WAS
LAST YEAR
– PLEASE
JOIN US
THIS YEAR!**



TUNE INTO RADIO ADDINGTON AT 107.5 FM.

PORTERSHED



Photo above: Emma at the counter.



Above: A cosy corner to read and relax.



Above: Photos of Bob Porter's Addington.



Above: 322 Lincoln Road with a smart new coat of paint.

Where do you start with a story about Addington's Portershed specialty café? I could kick off by saying it's the only eatery in Christchurch to offer completely plant-based, cholesterol-free food. As such, it really is a 'specialty' café that caters for the long-neglected vegan diner. Then again, there's the way that such a friendly-feeling cafe offers warmth, conversation and atmosphere in spades — but not, unusually, wi-fi. Screens don't dominate at this eatery.

Or there's the handle 'Portershed' which is more than just an unusual name for a business. It pays homage to the grandfather of owner Emma Wood. Bob Porter was part of old Addington and, says Emma, the kind of bloke who really enjoyed his shed. The Porter family owned a wrecking yard at the railway end of Lincoln Road in what was then very much a working class suburb.

I could also mention Portershed's books which can be found on a shelf near the fireplace. Customers are welcome to relax on the couch and enjoy the warmth and a good read along with the coffee and the delicious far.

Addington Times readers will remember Addington Print on Lincoln Road, next door to the dry-cleaners. It was owned by the late Brian Mackay, who for many years did a marvellous job of printing each edition. Brian's printery has been transformed into Portershed. 'It was hard slog, day in, day out, but the bones were here,' says Emma. She and her partner Josh worked with builder Ivan to make the most of the rimu timber and other original features from Addington Print.

With regard to the menu, vegan food and veganism are stories in themselves, but Emma puts the philosophy simply: 'To cause the least amount of harm possible to any living species of animal or human.'

The writer can remember when being vegetarian was pretty radical and vegetarian dishes weren't menu options as they are now. Similarly, in recent times the word 'vegan' is seen and heard more. Emma says vegans in Christchurch were resigned to the fact that there wasn't a specialised eatery catering for them and that limited their ability to socialise. But that has changed. 'When they found us, well it has just been quite incredible. They have been waiting so long for somewhere to go.'

Since Portershed has been open, Emma no longer has to do all the cooking. There are now six staff including Emma and a fulltime chef. Family help out too. The working days are still long but things are going well. 'There has been a better response than I ever imagined,' Emma says with a smile. **Di Boyd (text and photos).**



ADDINGTON TIMEBANK

Our members exchange their time helping others in order to 'purchase' the help that they themselves need. Members don't have to make a one-to-one exchange. Just advertise what you can offer and/or the help you are looking for, and see who responds.

You can join us either on-line at www.addingtontimebank.org or come to our community centre, Manuka Cottage (currently based at St. Marys, Church Square) 11am to 1pm on a Wednesday, and have chat to Chrys.

Current requests on the Timebank include someone who wants help fixing a bike or perhaps even being given a bike. Tutoring for a pre-schooler and weeding a small garden. People are offering someone to help with learning Swedish, crocheting baby clothes, and someone offering to help with electrical work.

A History of Addington

The Addington Neighbourhood Association has been working for some years with local historian John Wilson, to publish a written history of the Addington area. This book is currently being designed and edited by local printers, Caxton, and will be ready for distribution on 16th November 2017.

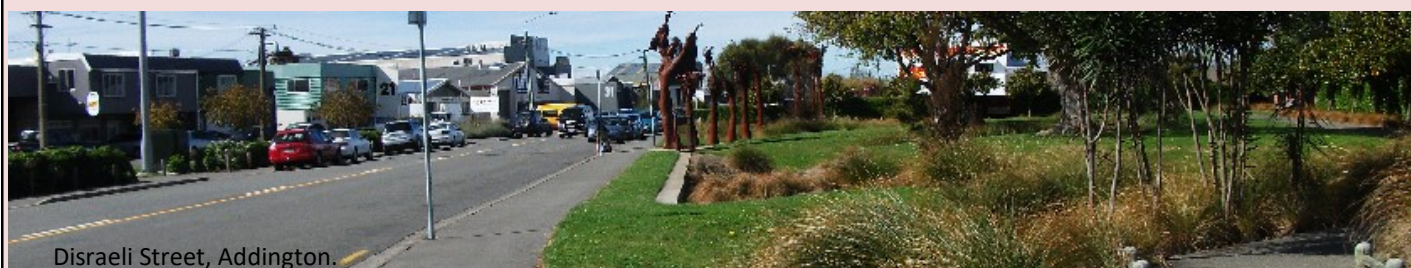
The book will have a retail price of \$50, which is a very good price for a book of this quality, owing to it being subsidized by funding grants, sponsorship and fund-raising. It will be hard-bound, approx. 245 x 297mm, containing 320-370 pages of 128 gsm satin paper. It will be generously illustrated with old photographs drawn from many sources and with maps specially drawn for the book.

To make this book even more affordable for the residents of Addington, we are offering a special pre-publication price of only \$40 per copy (plus \$6.50 per copy for postage, if required) up until 15th November 2017. Books must be paid for in full at time of ordering and collected from the ANA in November. Delivery of large local orders will be considered on a case by case basis.

Send your order to addingtonhistory@xtra.co.nz Details should include name, contact phone number, address (if order is to be posted), and number of copies required. You will be sent an order number and a bank account number. Alternatively, you can bring cash or a cheque to the next ANA meeting, held at St Mary's Addington, Church Square, at 7pm on the last Wednesday of the month. An order form is also available on the ANA website: www.addington.org.nz

Businesses can help by offering sponsorship/donations (and will receive acknowledgement in the book) by purchasing books for their staff (ideal Xmas gifts) by putting advertising flyers on their wall or by selling books on behalf of the ANA. Please contact us through addingtonhistory@xtra.co.nz

Graham Robinson (for ANA).



Disraeli Street, Addington.

Manuka Cottage Addington Community House Incorporated

Operating from St Mary's Church

Activities Co-ordinator: Dianne Fitzgerald

A warm and friendly place for you to enjoy, run by the community for the community.

- Mon** 10am Walkie Talkies Walking Group
10am-1pm Coffee n Chat—10c per cup
11am Parlour Games, cards, etc.
11am-1pm Art Group (limited places)
- Tues** 10.30am- 3pm **Women only Day**
Morning tea, Bits and Bobs Projects, Bring and Buy
12 noon Shared lunch
1pm Craft Group - gold coin donation
- Wed** 10.30 -11.30am cuppa n chat
12-1pm Community Lunch - gold coin donation
11am-1pm Manuka Trading Post Timebank
11am-2.30 pm Manuka Fruit and Vege Co-op
Collect your order and pay \$14 for the next
- Thurs** 10am Addy-venturers Walking Group
10.30 am-12 noon Writers' Group
10 am-12 noon Café 10c per cup, 20c biscuit
12.30-2.30 pm Mothers' Community Programme

New activities and groups will arise from time to time. Our goal is to help you to have a sense of belonging and connection in your neighbourhood.

Everybody is welcome and accepted.

Cherylan Davies, Community Development Worker.

Ph: 338-2591, or visit us at our temporary location at St Mary's, Church Square, Addington.

The Great Spreydon Library Seed Swap Saturday, September 9, 2017 (10:00AM – 1:00PM)

Got some home-saved (or leftover bought) seeds to share? Pop them to us at Spreydon Library and we'll put them out for everyone to share on Saturday 9th of September.

This is for everyone! Don't worry if you don't have any seeds to share this year, you might next year. We welcome vegetable, herb, flower, native and heritage seeds - and you can even bring any spare seedlings you have potted up.

Seeds can be dropped in any time before or during seed swap week - if you're bringing in seedlings, please drop them off at the beginning of the week. Grow those seeds, save new seeds, and share your surplus next year!

Thank you and happy gardening!

Rémy Barbier, Community Learning Librarian.

PS: There will also be a seed swap at South and other libraries too.

ADDINGTON NEIGHBOURHOOD ASSOCIATION

Historian, John Wilson, joined us for our July meeting. He is getting to the final stages of preparing his Addington history book and looking into printing and fundraising for the costs of publishing the book. Our members are working hard at sorting out the best way to publish the book and promote the history of Addington.

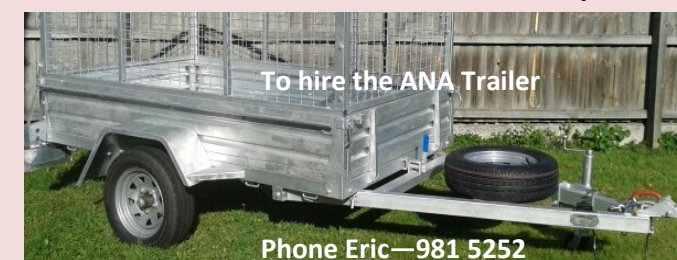
September 16th is **Keep NZ Beautiful Day** and we will be at the Addington Cemetery from 9.30 till 11.30 am weeding and clearing up. We hope to see as many local residents there as possible.

Accessible Survival Kits are all up and running. Amanda has got our bank account details so it's really simple to pay a small weekly amount and build up a survival kit. For more information, see: addington.org.nz

We are lucky to have two trailers that we hire out to the local community. We have the best rates around. Contact Eric in the evenings if you are after a trailer.

Our meetings are held on the last Wednesday of the month, 7pm at St Mary's Church. All welcome.

Sarah McKenzie, ANA Chairperson.



Megan WOODS

Member of Parliament for Wigram



P 338 6347 or 338 6307
E megan.woods@wigram.org.nz



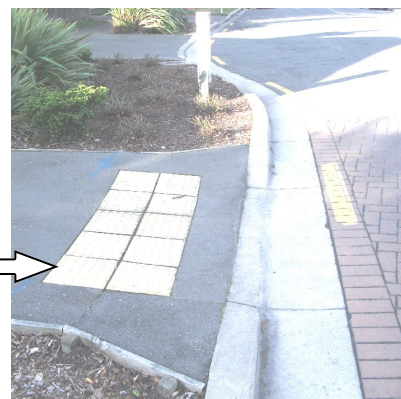
Labour

Authorised by Megan Woods MP, Shop 8/12 McCarthy Street, Christchurch

Marie's Corner

Looking out for people with disabilities

Photo right:
Please don't obstruct
these yellow raised
tiles at the roadside.
They are there to
help the disabled —
especially the visually
impaired.



Hi all!

This month I am going to talk about
Yellow raised tiles and Christian
fellowship for disabled.

Yellow raised tiles

As you are walking around Addington you will see some yellow raised tiles at the end of some footpaths. They are not there so that you can put your rubbish bins on them or park in front of them. They are there to help people who are blind or have low vision to cross the road safely.

Christian fellowship for disabled

This is a Christian group for people with disabilities and able-bodied people who meet bi-monthly on the 2nd Saturday between 11.30am and 3.30pm. If you need any information or you can help in any way. Contact Dave Palmer by e-mail davepalmer@xtra.co.nz or cell ph. 027 2165743.

MarieZittersteijn



On August 19th, Marie attended a special meeting called by the Disabled Persons Assembly NZ Inc. Christchurch Branch, to hear from candidates in the General Election about their party policies on behalf of the deaf and disabled.

In the photo left, Marie poses for me with (standing L-R): Poto Williams, Labour MP for Christchurch East; Mojo Mathers, Green MP for Rangitata, and Nicky Wagner, National MP for Christchurch Central — all of whom speak for the disabled in the current parliament. (Ed.)

Addington OSCAR

After School Care and Holiday Programme
High quality and low cost care for your child
A variety of activities including sports, games, toys, art, crafts and cooking

After School 3pm – 6pm
\$14 per session

Holiday Programme
Long Day \$35 (7.45-5.30)
Short Day \$25 (9-3)

WINZ assistance available and supported by the OSCAR network and MSD

Addington OSCAR
The Haven
19 Poulson St, Church Square

Phone 0204 086 49 47
Coordinator: Menna Harries
Email: addingtonoscar@yahoo.co.nz

An Ode to Dave

No TV tonight
No programmes to be watched
Only the sound of music from
yesteryear
50's, 60's, 70's and maybe 80's
Name a song
And there it was online
That was Dave
A disc jockey
A lifelong player!!
Winnie. W.

How Hard Can It Be?

MMP - Mixed Member Proportional - is the system we currently use to elect our Parliament in New Zealand. This means you get two votes. One vote for the Political Party you prefer and one vote for the MP that you wish to represent the electorate you live in.

The Party vote decides how many seats each Party will receive from the 120 seats in Parliament and is the most important vote as it determines which Party will be in power. The Party with the most seats will usually form a Coalition or an agreement with one or more Parties to get the majority of seats to form the Government. Seats in Parliament are won by parties who receive over 5% of the Party Vote or who win their Electorate Vote.

The MP vote is about the person from a political party representing your electorate and the MP who gets the most votes becomes your local MP. Currently that is Megan Woods Labour in the Wigram electorate and Nicky Wagner National MP for Christchurch Central. You may have a particular Party that you prefer to be the Government in power but not like that Party's MP in your electorate. In this case you can vote for the person you prefer regardless of the Party they represent. It is the Party vote that decides who will govern and that Party needs 61 seats to be in power.

Using the last General Election as the illustration, National won 60 seats in the Party vote and formed confidence and supply agreements with United Future (1 seat), ACT (1 seat) and Maori (3 seats) Parties forming a minority government. John Key was the Prime Minister of the 51st Government and the remaining 59 seats were filled first from the MPs who won their electorate vote and then members from the National list MPs. Labour won 32 seats, Greens 14 seats and NZF 11 forming the opposition parties in Parliament.

As you can see it is important that you have a say and that is by voting. You will receive in the mail a list of places to vote in your voting pack along with your voters' card and other information to help you fill out the form. Just remember you have two votes - who do I want to be the Government of the day, and which MP from my electorate do I want to represent me in Parliament? Easy peasy!!! See you at a Polling Booth near you.

Cherylan Davies, Community Development Manuka Cottage

In July we reported that Dave Gorton had received a Community Services Award for his voluntary work in Addington. Sadly, he wasn't able to collect the award in person as he was seriously ill. He died on July 30—just a few days before his 65th Birthday. Our love and concern go to Sue and the family (Ed.)

Remembering Dave ...

It was with great sadness we attended the funeral of Dave Gorton on Saturday 5th August — the day that would have been his 65th birthday. Dave was a quiet man, but he was very involved in the Addington community. He was on the Core Governance group of Manuka Cottage, on the Manuka Cottage Building Committee and on the Addington TimeBank Committee in the early days of formation, active in the Addington Well-being and Addington Neighbourhood Association meetings, and of course, a past Editor of the *Addington Times*.

Dave had a vast knowledge of Addington history which he enjoyed sharing with others. He particularly enjoyed his association with Manuka Cottage. Towards the end

A Sad Farewell



of his life I would escort him to the Cottage from his place, and he could never get there quickly enough. He enjoyed the people there and bringing his technical 'toys' to show and explain how things worked. He was an electrician by trade, played many years in a band and had vast knowledge of all things trains.

I loved his sense of humour. He and I watched police chases on TV — fools trying to shoplift from Walmart in the US. We enjoyed lots of laughs together and I will miss that. Dave, we will miss you but I am sure God has a wonderful drum set waiting for you. Play on!

... A Friend