

OLD ADDINGTON: The Star Hotel (late Feathers)

Mr J.A. Hansman's Star Hotel was well known to the early settlers in Addington. It was the oldest hotel outside the four town belts (today's avenues) of the township of Christchurch. Hot and cold water was laid on all over the building, both for household use and for fire prevention purposes. This was no doubt because the original Feathers Hotel was destroyed by fire in 1884.

The Star Hotel was situated on Lincoln Road close to the Addington Railway Station, the Government

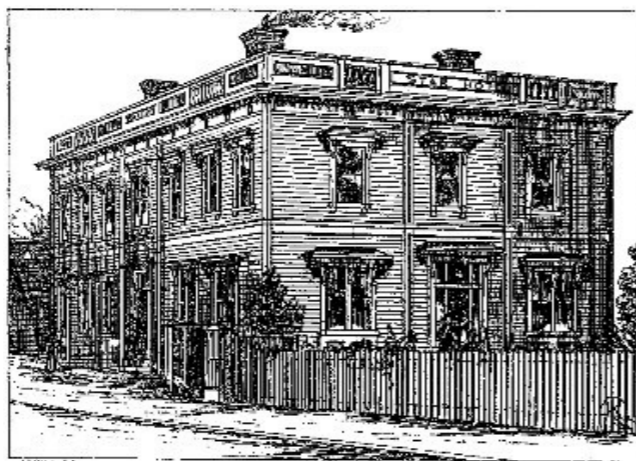
Railway Workshops, and the Addington Sale Yards. It was just across the road from the Addington Police House (station), where police kept a wary eye on the goings-on at the hotel.

The hotel's site covered an area of over one and a half acres, and on its grounds it also had stables, outhouses, and private entrances – with one leading out into a large garden.

The hotel had a large dining room, and two bars, one of which was a parlour bar. There were twelve bedrooms, two sitting rooms and a bathroom. No expense was spared and all the rooms were both comfortable and elegant. Much care was taken to supply the wants of the most fastidious or fussy visitors that stayed at the hotel.

Mike Burdon.

NOTE: Unfortunately all the precautions did not prevent the Star Hotel being destroyed by fire. Local residents remember smelling the smoke as it rose across Addington.



We haven't found a photo of the Star Hotel, but this (unattributed) drawing is on the internet.

Addington Times

The production of Addington Times is a joint project of Addington Neighbourhood Association and Manuka Cottage Addington Community House. Funding towards production costs is kindly provided by the Spreydon-Heathcote Community Board.

Editor: Doreen Darnell.

E-mail: addington.times@gmail.com

Our copy deadline is the 14th of each month.

Addington Times is available in colour online at: www.addington.org.nz

Printed by Addington Print, 322 Lincoln Road.

© Copyright remains with individual contributors.

Path to Addington Cemetery, from Braddon Street

The Voice of the Addington Community



AUGUST 2014

ADDINGTON'S HISTORIC CHARM

VERSUS THREE-STOREY INFILL HOUSING

(Editorial)



Addington's historic cottages and villas date from the late Nineteenth Century. Many of them have retained their exterior features, but rough-sawn boards are now gaily painted, picture windows may have been added at the back and space has been made inside for modern bathroom facilities. Heritage status with the limited protection that brings today is only conferred on properties that have not been greatly altered. Nevertheless, there is no doubt that the exteriors of the well-maintained older Addington properties shown here, add hugely to the attractiveness of our suburb.



When locals were asked how they would like to see Addington in the future, one interesting opinion was that Addington should preserve its history in at least one designated area, like "The Rocks" in Sydney, which could then become a must-see tourist attraction.



On the other side of the argument, people say that modern three-storey buildings are warmer, have modern conveniences, take up less ground space and are essential to the city's post-quake recovery.



But the two are not compatible. People living in single-storey homes are overshadowed by new housing blocks and many will move on if they can. Some tenanted blocks are home to earthquake refugees and short-term tenants employed in the "rebuild", so no feeling of community exists. Developers are said to be "land-banking – buying up old homes until they have a sizeable parcel of land to be sold eventually for maximum profit when the homes are demolished. Meanwhile some developers may ignore their tenants and fail to maintain the homes.

It seems to me that, inevitably, history and heritage will suffer and Addington will be the poorer for that.

addington.net



Addington.net programme (314a Selwyn Street)

Monday

10.00 – 12.00 pm Free senior internet
10.30 – 12.00 pm Free Addnet learning group
1.00 – 2.00 pm Free Android Club (book)

Tuesday

10.00 – 12.00 pm Free senior internet
10.30 – 12.00 pm Free Addnet learning group
12.30 – 1.00 pm Free Volunteer.net for community groups (book)
3.30 – 5.30 pm Free IT Kids Club (7 to 10 year olds)

Wednesday

10.00 – 12.00 pm Free senior internet
10.30 – 12.00 pm Free Addnet learning group
1.00 – 2.00 pm Free Digital Art Club (book)

Thursday

10.00 – 12.00 pm Free senior internet
10.30 – 12.00 pm Free Addnet learning group
3.30 – 5.30 pm Free Addington Digital (10 to 15 year olds)

Friday

10.00 – 12.00 pm Free senior internet

For more information call 9627244 or email info@addington.net.nz



Contact us at
addington.timebank@gmail.com
or join us at addington.timebanks.org
or visit us at Manuka Cottage at
St Mary's Church,
between 11am and 2:30pm on Wednesdays or

ADDINGTON BUSINESS ASSOCIATION

Contact Dean at:
addington.business@gmail.com

Meet the Candidates Luncheon

The General Election will be held September 20th 2014. Before you can vote you must be enrolled. You can do this at www.elections.org.nz or ring 0800367656. To inspire you to participate in the coming elections and make an informed choice from the local MPs for your Electoral Vote, Manuka Cottage will host a Meet the Candidates Luncheon at St Mary's Church, Church Square at 11am September 10th. Candidates will address local Addington issues. Come along with any questions you may have. Lunch is on us!

Cherylan Davies Community Development Worker, Addington.

CHANGES CHANGES CHANGES



Metro Mart has just opened next to Citywide Florists at the City end of Lincoln Road.



The Vanilla Bean Café at 359 Lincoln Road is now under new management (Proprietor: Poppy Liu.)



The building of a row of shops in Selwyn Street is now complete and ready for lease.

CPNZ—KEEPING OUR COMMUNITY SAFE

I have often seen a smart CPNZ car parked alongside the Z Service Station at the corner of Lincoln Road and Barrington Street, but I didn't realize how special it was to our community until Mike Fenton, volunteer and treasurer to the local group, put me in the picture.

Christchurch South Community Patrol is one of many volunteer groups throughout the country who donate their time and resources to assist the New Zealand Police. They have direct links to the police at all times, and though they do not take action except in an emergency, they provide extra eyes and ears, to identify

instances of criminal offending, drunken behaviour and suspicious activity. They look out for stolen cars and patrol industrial areas, businesses and schools after hours.

Mike tells me that the mere presence of the CPNZ vehicle can be a deterrent to would-be trouble-makers. Regular patrols when crowds gather at the Raceway or the Rugby Stadium can ensure that all is quiet, and a presence among the Lincoln Road bar patrons on Friday and Saturday nights can be equally effective.

The Christchurch South Community Patrol covers suburbs from Halswell to Ferrymead and Addington to Cashmere. The patrol is on the lookout for new volunteers over 21 years old with a clean driving licence. They would be required to offer up to 10 hours per month with a choice of either day or night rosters. Female applicants are especially welcomed.

If you are interested in volunteering, please phone David Scott, on 021 295 2342, or call at the Christchurch South Police Station to register your interest. (Ed.)



PLEASE PROTECT OUR HERITAGE

Recently there has been quite a lot of vandalism in and around Church Square (see photos). This is very disappointing both for the Addington community and Saint Mary's. The church has the responsibility for the maintenance and management of most of this area (trees/lighting/buildings/grassed area) and does its best to create a welcoming area for people to enjoy but it is struggling with some of this destructive behaviour.

There have been vehicles inside the grounds late in the evening damaging the grassed areas and also breaking the memorial stone gatepost/and chain fence. There are also drivers who are deliberately coming off the roadway and skidding through the grass berm on the north-west corner of the square (I have seen them doing this). The Police, Christchurch South Community Patrol and City Care have been advised about this, so if anyone notices this behaviour taking place please note the registration number (if possible) any other details, and contact the police immediately as they may have a patrol car in the area. Increased surveillance is also an option to be considered.

Saint Mary's really appreciates those community members who keep a watchful eye on this Heritage area as it benefits everyone if it is kept looking great.

Allan Hudson, St Mary's
(Photos: Nate Cull)





Photo: Volunteers with Community Board Members and the Community Development Worker.

COMMUNITY SERVICE AWARDS 2014

Each year the Spreydon Heathcote Community Board acknowledges the volunteer contribution within the ward by presenting the nominated volunteer with an award at the Community Service and Youth Awards ceremony. This was held at the Cashmere Club on the 24th June.

Of the 22 recipients, 11 people were nominated for the volunteer work they do in Addington. Congratulations to the following people:

Nick Matson—makes community lunch and runs Nick's café at Manu-

ka Cottage; **Blair Kenton**—a member of the Core Governance of Addington Community House, established Radio Addington 107.5FM, is a member of the Addington Neighbourhood Association and Treasurer of Addington Playgroup; **Laureen Hand**—for her contribution to the New Harvest Trust and at Manuka Cottage as a volunteer assisting Diane Fitzgerald as required; **Julie Derrick**—for her many years as Chairperson of ANA and her contribution to the Manuka Cottage Fruit and Vege Co-op; **Brian North, Ian Rawson** and **Tim Redwood** for their involvement in the Manuka Cottage Fruit and Vege Co-op; **Francesca Edwards Ellis**—for her role in assisting Amanda Wallis at Kindy Ballet at Selwyn Street Kindergarten; **Julia and Trevor Munro**—for their commitment to graffiti removal in Addington through the CCC Off The Wall programme; **Sarah Pullman** for assisting Cherylan Davies and Amanda Wallis in co-ordinating community events in Addington.

It is a good time to recognise all who contribute their time, skills and energy as volunteers. The Addington Times you are now reading is a fabulous example of volunteer contribution. Most of the content is produced by volunteers, it is edited by a volunteer. When printed, it is folded, sorted and delivered by many volunteers. So to all the people out there who volunteer in whatever capacity, thank you. You do make a difference! Of course this is why Addington is a great place to LIVE, WORK and PLAY.

Cherylan Davies,
Community Development Worker, Addington.

Seated left-right: Julie Derrick, Laureen Hand, Julia and Trevor Munro, Francesca Edwards Ellis, Karolin Potter.

Standing left-right: Cherylan Davies, Helen Mautner, Nick Matson. Ian Rawson, Tim Redwood, Sarah Pullman, Melanie Coker, Phil Clearwater, Rik Tindall, Amanda Wallis, Paul McMahon, Tim Scandrett. Missing from photo: Blair Kenton and Brian North.

Megan WOODS
Member of Parliament for Wigram



P 338 6347 or 338 6307
E megan.woods@wigram.org.nz



Labour

Authorised by Megan Woods MP Shop 8/12 McCarthy Street, Christchurch

Manuka Cottage Addington Community House

Incorporated

Operating from St Mary's Church
Activities Manager: Dianne Fitzgerald

A warm and friendly place for you to enjoy, run by the community for the community.

Mon	10.am	Walkie Talkies Walking Group
	11am	Parlour Games, Jigsaw Corner, etc.
	12-1pm	Coffee n Chat - 10c per cup
Tues	11am—2pm	Women's Only Day
	11am—2pm	Bits n Bobs projects
		Bring and Buy Shared lunch
Wed	10.30 -11.30	Pop in for a cuppa! 10c per cup
	12-1pm	Community Lunch Gold Coin Donation
	11am-2.45pm	Manuka Fruit and Vege Co-op (collect your order and pay for the next)
	11am-3pm	Manuka Hub Addington TimeBank
Thurs	10.am	Addy-venturers Walking Group
	10-12 noon	Café 10c per cup
	10.30-12	Ideas & Action
	12.30-2.30	Mothers' Community Programme

Unless stated our activities and groups are free.

New activities will arise from time to time. Our goal is to help you to have a sense of belonging and connection in your neighbourhood. **Everybody is welcome and accepted!**

Cherylan Davies, Community Development Worker.
Ph: 338-2591 or visit us at our temporary location at St Mary's Church, Church Square.



Addington Fun Fair update for stallholders

The Addington Fun Fair is back again this November and will be even better than last year (not sure if that's possible but we will try).

If you would like to have a stall or run some fun games at the fair, please email Shauna at shauna.robins@gmail.com.

Please tell anyone else you know who might be interested – remember we like to keep it local, crafty and fun.

The date of the fair is Saturday 22nd November (11am-3pm) and the wet weather date is Sunday 24th November (12pm-4pm) at St Mary's Church Square in Addington.

GENERAL ELECTION September 2014

Make sure you are enrolled to vote.

Attend the "meet the candidates" session if you can.

September 3rd Advance and Overseas voting closes.

September 20th Election Day (9am—7pm polling)

ADDINGTON NEIGHBOURHOOD ASSOCIATION

There was a good turnout to our June meeting where among other things discussed were the problems people have when the traffic builds up along Selwyn St at peak times. People who live on Selwyn Street have great difficulty in gaining access to their properties. Letters have been written to the NZ transport agency and the City Council, and apparently NZTA has passed the problem back to the City Council which has formed another group to look into this matter.

There is some good news: the Spreydon Heathcote Community Board is holding a forum on July 22 and has invited a representative from ANA. I will attend and report the outcome at our AGM on August 27th. At our June meeting Paul McMahon (Chair of the Spreydon Heathcote Community Board) announced that the Community Board is giving the ANA money to buy a new trailer. Many thanks to the Community Board for this grant.

The ANA has been without a trailer for two years, since the old trailer was not returned after being hired out one Saturday.

With the grant we will be able to buy a really up-to-date multi-purpose model. There will be information on charges for trailer hire in future editions of the Addington Times. We are using the money raised from trailer hire to fund John Wilson's Addington History Book (not to be confused with our People's History of Addington currently also in preparation).

As mentioned the AGM is on the 27th of August. It will be held at Harmon Courts Community Lounge at 7.30pm. At present there is no guest speaker arranged so it will be a surprise! There will be supper and a nice warm room to meet in.

A couple of issues ago in the Addington Times someone said there is no supermarket in Addington. Don't forget there is a very good fruit and vegetable shop also selling meat at Tower Junction, with a bakery nearby. Also there is a general store/mini-mart on Lincoln Road and lots of good places in the malls either side of Lincoln Rd between Parlane St and Clarence Street. Shop locally!

Julie Derrick, ANA Chairperson.

Oddfellows Café Disraeli Street



The café interior also has the original eye-catching iron ceiling bracing. Jenny says visitors have come from the United States and know it has been an Oddfellows Lodge. “We have had people from the Washington branch visit and also members of the public who had their 21st or some other occasion here.”

Oddfellows Café is part of Hummingbird Coffee, owned by George and his wife Sue. When they pulled down the front Oddfellows hall they found a “time capsule” behind a little stone plaque. A tin cylinder contained a disc with the date on it. There was that day’s page from the “Lyttelton Times” and a poster giving some of the Lodge’s history. In a remarkable co-incidence, the capsule was found on Friday 5 December 2004 – exactly 80 years after the date on the disc. The poster, headed “Washington Lodge No. 28 Independent Order of Oddfellows”, and the newspaper are behind protective glass and hanging in the café.

Jenny recalls the way life was at the café after the February 2011 quake. “This place was ‘raging’ after the earthquake. You can imagine. People had no electricity and no running water and as soon as people could, they went to cafes to meet up and support each other.”

George takes up the story: “We couldn’t open for a few days but we had two customers who came down from Auckland and Wellington at their own expense to help out. One brought a generator and we got water from a local spring and did free coffees from a cart. On the day of the earthquake Jenny had just received an order of bacon. We gave away free coffee and bacon butties. It was just amazing how people pitched in.”

None of that would have been possible if the Oddfellows Café had been damaged but, due to wise counsel from an engineer, it wasn’t. “Fortunately we were advised to put a band of steel around the building to strengthen it and it worked,” Jenny said.

Di Boyd.

Photo: The sculpture by Paul Dibble outside the café.



Addington’s Oddfellows Café is built on the site of a meeting place for the “Oddfellows” of a bygone era. I spoke with café co-owners George Cowper and his sister-in-law Jenny Macdonald about the dingy hall they turned into a café a decade ago, and talk turned to a time capsule and to recollections of Addington’s earthquake days.

There wasn’t one but two halls at 5 Disraeli Street that served for meetings of the Independent Order of Oddfellows. The first was built of wood and plaster in 1884. Membership grew and in 1924 it was moved back on the section and an adjoining hall of brick was built.

The halls were past their heyday by 2004 when the café was established, but they had been venues for Lodge meetings, dances and other social occasions. George says that in 1924 the Oddfellows Lodge had 700 members, having grown from just seven.

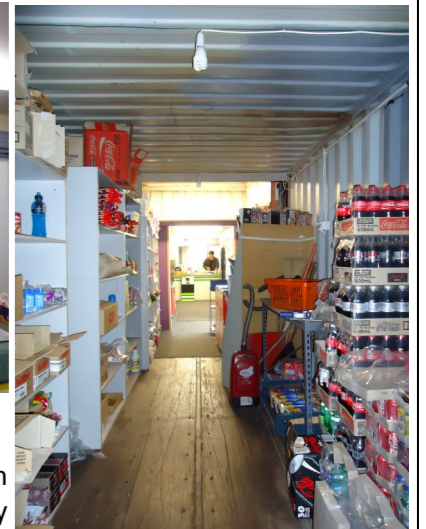
Jenny well remembers what the place was like a decade ago. “It was in very poor condition but the bones were good. The brick front hall nearest Selwyn Street had an atmosphere. It had a sprung floor and dances had been held there and it was used for ballet classes. It was triple brick and had to be demolished because it was too expensive to make earthquake-proof”.

But the other hall remained. Once the big job of stripping off the interior paint was completed the bare matai and rimu timbers could be seen and appreciated.

Many thanks for post-quake customer support!

Many readers will know the roughly-painted signs that point to the little Selwyn Dairy near Addington School. It has become a landmark for drivers on Brougham Street. The present dairy is too hot in summer and cold in winter but it provides welcome employment for owner Frank Yan. However, the Selwyn Dairy faces an uncertain future.

In an earlier edition of the *Addington Times* it was described as the dairy “that refused to die” but that’s not quite true. The September 2010 earthquake dealt a blow to the Selwyn Street shops and the dairy (then on the corner of Rosewarne and Selwyn Streets) was forced to close. That’s how it stayed until the end of 2011 when it re-opened at the end of Somerset Crescent. Frank says the “drive in, drive out” feature of his dairy has worked well and suits travellers on Brougham St. However the arrangement of it is less convenient for local customers. “I’m sorry for that” he says. Frank is very grateful to the locals who have continued to shop at Selwyn Dairy. His old shop was demolished.



Like so many shops in Christchurch, the dairy is now made partly of shipping containers, but it’s not as small as it seems at first glance.

The future for the area is uncertain and Frank doesn’t know what this will mean for him. “I hope to be here as long as possible”, he says.

Di Boyd.



Above, left: Frank behind the counter; right, the main container.
Below: view from the street.

ADDINGTON’S LITERARY STREETS (2)

Ruskin Street

Ruskin Street, Addington, was renamed in the 1880s and its statue and landscaped gardens were added in 2006.

John Ruskin (1819-1900) was known in Victorian times as a writer, philosopher and arbiter of taste. He was the son of a well-to-do Scottish wine merchant who lived in London. Ruskin was educated at home before spending five years at Oxford University. However, ill-health prevented him from sitting for an honours degree.

Ruskin’s taste was strongly influenced by the English Romantic painters including Constable and Turner, and he supported the Pre-Raphaelites who looked to Medieval Times for their inspiration in art. He travelled extensively and in 1843 published *Modern Painters*, a five-volume work which took him 17 years to complete. He then turned his attention to architecture, in 1849 publishing *The Seven Lamps of Architecture* in three volumes and then *The Stones of Venice*, also in three volumes (1851-1853), which celebrated the Italian Gothic style.

Ruskin was appointed Slade Professor of Fine Art at the university in 1870 and today a prestigious School of Art in Oxford bears his name.

In 2006, the Christchurch City Council commissioned the sculptor, Chris Reddington, to produce the statue that stands in a pleasant garden area bordering Ruskin Street today. Its aim was to “restore confidence of private owners in their neighbourhood”. Given that Ruskin was very much in favour of the conservation, we may perhaps wonder what he would think of the present-day destruction of Christchurch’s heritage buildings.

D. Darnell



The quotation from Ruskin round Chris Reddington’s statue reads: “No human being however great or powerful was ever so free as a fish.”